

Dosing Pot

Model DP - (For Dosing Sealed Systems) - Datasheet

Description

Range of Dosing Pots for adding liquid chemicals – such as corrosion inhibitors and anti freeze solutions - to sealed heating and chilled circuits. The Pot should be connected between the main flow and return pipes, with the flow in at the bottom (PF) to aid venting.

All Dosing Pots are supplied with five full-bore spherical servicing valves, safety check valve, funnel and mounting brackets. The safety check valve is designed to prevent blow-back up the funnel thereby protecting the operative.

The unit is normally wall mounted at a convenient height. A wall stand is available. The connections are reversible for left or right handed or inline installations.

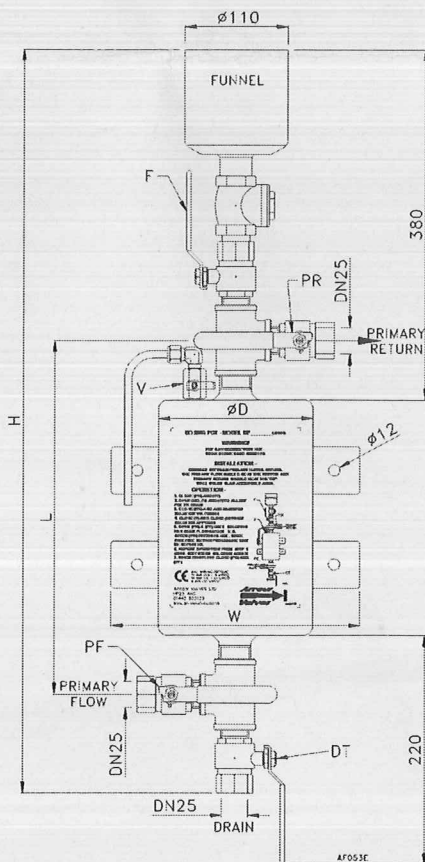
Connection Pipes

Flow & Return DN25 Female BSPP
 Reducing bushes supplied to DN20 & DN15
 Drain DN25 Female BSPP

Specification

Pressure Supply 14 bar max. 3.5 – 6 litres inc.
 10 bar max. 10 – 20 litres inc.
 8 bar max. 25 litres inc.
 Max. working temp. 120° C

Approvals PD5500:2000 category 3
 (CE marked)
 Welded to BS EN287

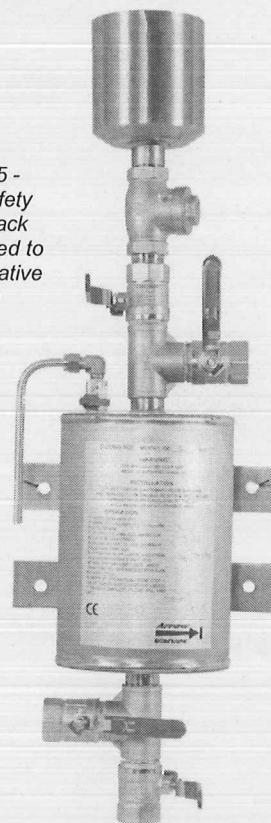


Dimensions

SIZE	ØD	W	L	H
3.5	165	265	295	740
5	165	265	375	815
6	165	265	430	865
10	220	220	435	865
11	220	220	510	865
13.5	220	220	575	950

SIZE	ØD	W	L	H
15	220	220	575	1010
16	220	220	575	1030
18	220	220	705	1142
20	220	220	705	1142
25	270	275	620	1045

Model DP5 -
 Note the safety
 anti blow back
 valve designed to
 prevent operative
 scalding



Materials

Pot, Funnel, Brackets, Pipes Stainless steel
 Valves Stainless with PTFE seats

Applications

- Sealed heating circuits
- Chilled water circuits

Sizing

The dosing pot size is not critical since this only determines the number of shots required. This can be calculated -

Pot size = Boiler kW x litres/kW x concentration ÷ no. shots.
 Litres/kW typically 10 – 14. Inhibitor concentration typically 1-4%. Assume 5 shots acceptable. E.g. -
 800 kW x 12 lt/kW x 0.01 ÷ 5 = 19.2 litres (use 20 litre pot)
 This criteria is used for boiler kW typical in table below -

Codes and Descriptions

Size	Code	Description	kW typ.
3.5	DP3.5	Dosing Pot c/w Valves - 3.5 Litres	
5	DP5	Dosing Pot c/w Valves - 5 Litres	200
6	DP6	Dosing Pot c/w Valves - 6 Litres	
10	DP10	Dosing Pot c/w Valves - 10 Litres	400
11	DP11	Dosing Pot c/w Valves - 11 Litres	
13.5	DP13.5	Dosing Pot c/w Valves - 13.5 Litres	
15	DP15	Dosing Pot c/w Valves - 15 Litres	
16	DP16	Dosing Pot c/w Valves - 16 Litres	
18	DP18	Dosing Pot c/w Valves - 18 Litres	
20	DP20	Dosing Pot c/w Valves - 20 Litres	800
25	DP25	Dosing Pot c/w Valves - 25 Litres	

Popular sizes – normally ex stock - in bold text

Arrow Valves Ltd

Tel: 01442 823123 Fax: 01442 823234

www.arrowvalves.co.uk

Arrow Valves Ltd reserve the right to change specifications, design and materials at any time without notice.

All unit-less dimensions in mm.

© Copyright Arrow Valves Ltd 2004-2015

